

ITINERARY

R & I W 2022 Excursion Trip (Optional)

Oyster BBQ Hut and Sake Brewery Tour in Itoshima

About Oyster BBQ Hut:

*Official website (Japanese only): <http://www.karatomari.jp/kakigoya/>

*Unofficial Store introduction page in English (This website is operated by a Japanese travel agency unrelated to this excursion. Never call or email the contacts listed on the website):

<https://www.japan-kyushu-tourist.com/itoshima-oyster-bbq-hut/>

About Sake Brewery:

*Official website (Japanese only): <https://suginoya.co.jp/info.html>

*Unofficial Store introduction page in English (This website is operated by a Japanese travel agency unrelated to this excursion. Never call or email the contacts listed on the website):

<https://www.japan-kyushu-tourist.com/sake-brewery-suginoya-itoshima/>

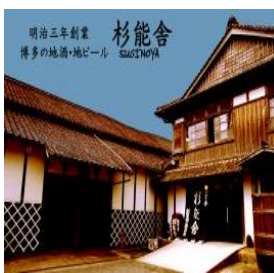
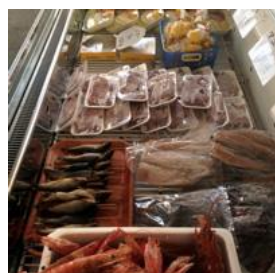
November 18th (FRIDAY)

13:00 PM	Gather at Shiiki Hall, Ito Campus
13:15 PM	Bus departure from Shiiki Hall, Ito Campus
13:30 PM	Bus arrive at Oyster Hut. Eat and drink there.
14:45 PM	Bus departure from Oyster Hut
15:00 PM	Bus arrive at Hamachi Sake Brewery. Sake Brewery Tour and Shopping.
15:45 PM	Bus departure from Hamachi Sake Brewery
16:00 PM	Bus arrive at Shiiki Hall, Ito Campus
16:15 PM	Bus arrive at Glocal Hotel Itoshima
17:15 PM	Bus arrive at Hakata Station



NOTES!!

- ▶ **Please register by November 7 via link or QR code.** <https://forms.office.com/r/UT5ccahVxw>
- ▶ The maximum number of participants is 20. As soon as it reaches the maximum number, the registration will be closed.
- ▶ Food and beverages at the oyster hut (approx. 3,000 yen) and cost of shopping at the brewery are self-paid by the participants.
- ▶ Payment at the oyster hut is by cash only. Credit cards are not accepted. Please bring several 1,000 yen bills in Japanese yen.
- ▶ Times are approximate. Please understand that the time may vary depending on the situation on the day of the tour.
- ▶ Luggage of large size, such as suitcases, is not allowed on the bus.



<Enquiries>

R & I W 2022 Office (Kyushu University)

E-mail: mirai.riweek2022@jimu.kyushu-u.ac.jp